

# HEIGHTS HOTEL WILDLIFE BREAKS

## Friday July 12th – Sunday July 14th 2019



### Saturday July 13th

**Weather: mostly cloudy in the morning, sunnier in the afternoon with a cool northerly breeze all day.**

Ferrybridge, 0900

After receiving a text during breakfast alerting us to a nearby Little Gull we delayed our visit to the Bill and headed north to Ferrybridge instead. Reaching Ferrybridge we were disappointed to see how far away all the gulls were but a careful examination revealed the Little Gull sat in the distance with a large flock of Mediterranean Gulls. The Little Terns and Ringed Plovers were even further away, especially after two Peregrines flew over and put them all up.

Portland Bill, 1000

Next we visited the most southerly point in Dorset, the Trinity House obelisk at the end of Portland Bill. Gannet, Shag, Razorbill and Guillemot were seen well with a group of four Common Scoter passing further out. Several Rock Pipits were around the rocks of the Bill Quarry along with several juvenile Wheatears.

Moving on to the Bird Observatory we spent a fascinating half hour checking through the Warden Martin Cades's moth catch which included a very smart Broad-bordered Yellow Underwing, an Elephant Hawk-moth and dozens of Lackey and Brown-tail moths.

Our route back to the bus took us across a beautiful wild flower meadow alive with butterflies, mostly Meadow Browns, Gatekeepers and Small Skippers. Reaching the Westcliffs a few Lulworth Skippers were found closely followed by some very fresh second-generation Small Blues.

Ferrybridge, 1330

Once our lunches were out of the way we checked through the gulls again to find that the Little Gull was still there, along with eight Ringed Plovers and a few Dunlins.

Tout Quarry, 1500

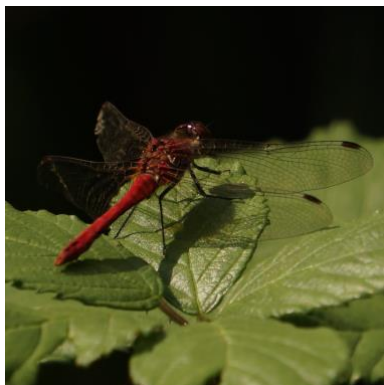
We finished the day in the quarry next to the hotel which, as the afternoon warmed up, produced a huge variety of butterflies. Freshly-emerged Chalkhill Blues were much in evidence along with a few Graylings and a single Small Copper. Most of the Silver-studded Blues were well past their best, as were all the Dingy Skippers, but we did find a small number of fresh male Silver-studded as well as a female egg-laying on Birdsfoot Trefoil. On the way back to the hotel we stopped off at the Fossil Forest to see the unique group of 130 million year-old tree-bowls.

### Sunday July 14th

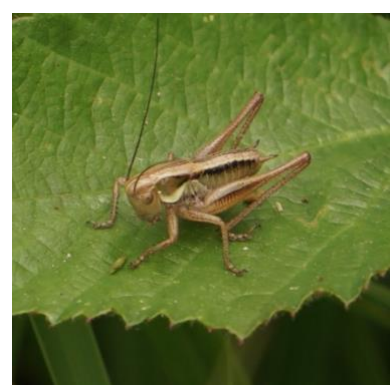
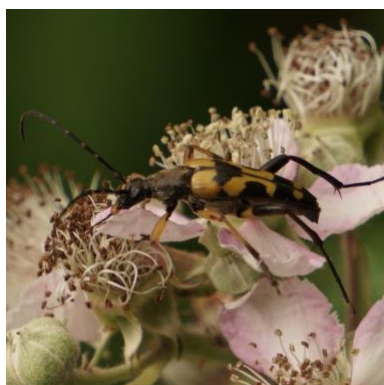
**Weather: cloudy with frequent warm sunny intervals especially in the afternoon**

Higher Hyde Heath, 1000

This outstanding Dorset Wildlife Trust reserve today produced a huge range of dragonflies including the locally rare Brown Hawker. Several darters were seen as well but examination of photos later revealed them to be all Ruddy Darters. Butterflies were on the wing in abundance with a couple of very fresh Silver-washed Fritillaries looking particularly impressive in the warm sunshine. In fact the weather was probably too hot for reptiles with just one possible Sand Lizard seen briefly.



Above: Ruddy Darter, the hoverfly *Sphaerophoria interrupta* and the micro-moth *Crambus pascuella*



Above: Spotted Longhorn Beetle, Meadow Grasshopper and Roesel's Bush-cricket

Arne RSPB Reserve, 1300

After lunch we walked out to Coombe Heath, stopping at the Raft Spider pond on the way. As well as a huge female spider sat on an impressive egg case we were delighted to see a pair of Emperor Dragonflies and many pairs of Small Red Damselflies. Next we stopped at the Middlebere Lake screen where a single Whimbrel was the only wader present apart

from the usual Oystercatchers. The highlight of the day was next when a male Dartford Warbler appeared just next to the path and treated us to a prolonged bout of song.



*Above: Southern Hawker, Emperor Dragonfly and Sand Wasp*

We finished the weekend with a remarkable 81 species of birds, 24 species of butterfly, 29 species of moth and 11 species of dragonfly. I didn't add up all the plants!

Looking forward to the next time,

Bob

**The weekend's list of species:**

Great Crested Grebe	Radipole
Gannet	Portland Bill
Cormorant	Portland Bill
Shag	Portland Bill
Fulmar	Portland Bill
Grey Heron	Radipole
Little Egret	Ferrybridge
Mute Swan	Radipole
Canada Goose	Arne
Mallard	Radipole
Common Scoter	Portland Bill
Tufted Duck	Radipole
Kestrel	Portland Bill
Peregrine	Portland Bill
Buzzard	Higher Hyde, Arne
Marsh Harrier	Radipole
Sparrowhawk	Tout Quarry
Coot	Radipole
Moorhen	Higher Hyde
Oystercatcher	Ferrybridge, Arne
Ringed Plover	Ferrybridge
Whimbrel	Arne
Dunlin	Ferrybridge
Black-headed Gull	Ferrybridge, Arne

Mediterranean Gull	Ferrybridge
Herring Gull	Portland etc
Great Black-backed Gull	Portland etc
Lesser Black-backed Gull	Portland Bill
Little Gull	Ferrybridge
Kittiwake	Portland Bill
Little Tern	Ferrybridge
Common Tern	Ferrybridge
Sandwich Tern	Portland Bill
Guillemot	Portland Bill
Razorbill	Portland Bill
Cuckoo	Portland Bill
Wood Pigeon	Portland etc
Collared Dove	Portland etc
Feral Pigeon	Arne
Stock Dove	Tout Quarry
Great Spotted Woodpecker	Arne (heard)
Green Woodpecker	Higher Hyde (heard)
Swift	Portland etc
Swallow	Portland Bill
House Martin	Heights Hotel
Skylark	Ferrybridge, Portland Bill
Meadow Pipit	Portland Bill
Rock Pipit	Portland Bill
Pied Wagtail	Ferrybridge
Wren	Portland etc
Duncock	Tout Quarry (heard)
Robin	Portland etc
Stonechat	Portland Bill, Arne
Wheatear	Portland Bill
Song Thrush	Higher Hyde (heard)
Blackbird	Portland etc
Dartford Warbler	Arne
Blackcap	Higher Hyde (heard)
Chiffchaff	Higher Hyde
Long-tailed Tit	Higher Hyde
Coal Tit	Arne
Blue Tit	Portland etc
Great Tit	Portland etc
Nuthatch	Higher Hyde (heard)
Treecreeper	Arne
Jay	Higher Hyde
Magpie	Portland etc
Jackdaw	Portland etc
Carrion Crow	Portland etc
Raven	Portland Bill
Rook	Wareham
Starling	Portland Bill
Greenfinch	Higher Hyde (heard)
Goldfinch	Portland etc
Chaffinch	Arne
Linnet	Portland etc

Siskin	Higher Hyde (heard)
Crossbill	Higher Hyde (heard)
Yellowhammer	Higher Hyde

### **Mammals**

Sika	Osmington
Rabbit	Kingbarrow Quarry
Bank Vole	Higher Hyde

### **Reptiles/Amphibians**

Sand Lizard (?)	Higher Hyde
-----------------	-------------

### **Insects**

Small White	Portland
Large White	Portland
Clouded Yellow	Arne
Dingy Skipper	Portland
Large Skipper	Portland, Higher Hyde
Lulworth Skipper	Portland
Small Skipper	Portland
Silver-studded Blue	Portland, Higher Hyde, Arne
Chalkhill Blue	Portland
Small Blue	Portland
Holly Blue	Higher Hyde
Small Copper	Portland
Red Admiral	Portland
Peacock	Portland
Small Tortoiseshell	Arne
Painted Lady	Portland
Silver-washed Fritillary	Higher Hyde
Meadow Brown	Portland etc
Gatekeeper	Portland etc
Small Heath	Portland etc
Marbled White	Portland, Higher Hyde
Grayling	Portland, Higher Hyde
Speckled Wood	Higher Hyde
Ringlet	Portland etc

Six-spot Burnet	Portland
Cinnabar	Portland
Scarlet Tiger	Portland
July Highflyer	Portland
Mother of Pearl	Portland
Thistle Ermine	Portland
<i>Crambus pascuella</i>	Higher Hyde
Scalloped Oak	Portland
Swallow-tailed Moth	Portland
Elephant Hawk-moth	Portland
Heart and Dart	Portland
Crescent Dart	Portland
Shuttle-shaped Dart	Portland
Flame Shoulder	Portland

Large Yellow Underwing	Portland
Broad-bordered Y. U.	Portland
Lesser Brd-bordered Y. U.	Portland
Bright-line Brown-eye	Portland
Brown-line Bright-eye	Portland
Smoky Wainscot	Portland
Common Wainscot	Portland
Dusky Sallow	Portland
Grey Dagger	Portland
Knot Grass	Portland
The Coronet	Portland
Dark Arches	Portland
Silver Y	Portland
Brown-tail	Portland
Lackey	Portland
Large Red Damselfly	Higher Hyde
Small Red Damselfly	Arne
Common Blue Damselfly	Higher Hyde
Azure Damselfly	Higher Hyde
Blue-tailed Damselfly	Higher Hyde
Ruddy Darter	Higher Hyde
Black Darter	Arne
Emperor	Higher Hyde, Arne
Brown Hawker	Higher Hyde
Southern Hawker	Arne
Keeled Skimmer	Higher Hyde, Arne
Red-tailed Bumblebee	Portland etc
Buff-tailed Bumblebee	Higher Hyde, Arne
Common Carder Bee	Higher Hyde
Honey Bee	Portland etc
Mining Bee	Arne
Sand Wasp	Arne
Wood Ant	Arne
Soldier Beetle	Portland
Spotted Longhorn Beetle	Higher Hyde
Roesel's Bush-cricket	Higher Hyde
Meadow Grasshopper	Portland etc
Field Grasshopper	Higher Hyde
Mottled Grasshopper	Arne
Marmalade Hoverfly	
<u><i>Episyrphus balteatus</i></u>	Portland
Great Pied Hoverfly	
<i>Volucella pellucens</i>	Higher Hyde
<i>Scaeva pyrastris</i>	Portland
<i>Sphaerophoria interrupta</i>	Higher Hyde
Horse-fly	Arne
Mottled Bee-fly	Arne

## Spiders

Raft Spider                      Arne

## Plants

### Bedstraw Family:

Lady's Bedstraw              Portland

Squinancywort                Portland

### Bindweed Family:

Bellbine                        Portland

Field Bindweed                Portland

### Birch Family:

Silver Birch                    Higher Hyde

### Borage Family:

Viper's Bugloss                Portland

### Broomrape Family:

Ivy Broomrape                Portland

### Buddleia Family:

Buddleia                        Higher Hyde

### Buttercup Family:

Clematis                        Portland

Creeping Buttercup          Portland

### Cabbage Family:

Black Mustard                Portland

Sea Radish                      Portland

### Carrot Family:

Alexanders                    Portland

Fennel                          Portland

Rock Samphire                Portland

Pepper Saxifrage              Portland

Wild Carrot                    Portland

### Daisy Family:

Autumn Hawkbit                Portland

Smooth Hawk's-beard         Higher Hyde

Carlina Thistle                Portland

Common Catsear               Portland

Common Ragwort              Portland

Creeping Thistle               Portland

Daisy                            Higher Hyde

Dandelion                       Higher Hyde

Fleabane                        Portland

Golden Samphire               Portland

Greater Knapweed              Portland

Hemp Agrimony                Portland, Higher Hyde

Lesser Burdock                Portland

Marsh Thistle                 Higher Hyde

Ox-eye Daisy                    Portland

Perennial Sow-thistle         Portland

Prickly Sow-thistle            Portland

Sea Mayweed                  Portland

Spear Thistle                  Portland

Stemless Thistle               Portland

Dock Family:		
	Curled Dock	Portland
Evening Primrose Family:		
	Evening Primrose	Higher Hyde
Fern Family:		
	Bracken	Higher Hyde, Arne
Figwort Family:		
	Broad-leaved Eyebright	Portland
	Common Toadflax	Portland
	Red Bartsia	Portland
	Yellow Rattle	Portland
Flax Family:		
	Pale Flax	Portland
Gentian Family:		
	Common Centaury	Portland
	Lesser Centaury	Portland
	Yellow-wort	Portland
Grass Family:		
	Red Fescue	Portland
	Reed	Portland
	Meadow Barley	Portland
	Quaking Grass	Portland
Heather Family:		
	Bell Heather	Higher Hyde, Arne
	Cross-leaved Heath	Higher Hyde, Arne
	Ling	Higher Hyde, Arne
Honeysuckle Family:		
	Honeysuckle	Portland
	Guelder Rose	Portland
Ivy Family:		
	Ivy	Portland
Maple Family:		
	Sycamore	Portland
Mint Family:		
	Marjoram	Portland
	Mint spp	Higher Hyde
	Self-heal	Higher Hyde
	Wild Basil	Higher Hyde
	Wild Thyme	Portland
	Wood Sage	Portland, Higher Hyde
Nettle Family:		
	Stinging Nettle	Portland
Olive Family:		
	Ash	Portland
	Wild Privet	Portland
Orache Family:		
	Sea Beet	Portland
Orchid Family:		
	Pyramidal Orchid	Portland
Pea Family:		
	Birdsfoot Trefoil	Portland
	Greater B. T.	Higher Hyde



European Gorse	Higher Hyde, Arne
Hop Trefoil	Higher Hyde
Red Clover	Portland
White Clover	Portland
Pine Family:	
Corsican Pine	Higher Hyde, Arne
Scots Pine	Higher Hyde, Arne
Monterey Pine	Higher Hyde
Plantain Family:	
Greater Plantain	Portland
Ribwort Plantain	Portland
Poppy Family:	
Field Poppy	Portland
Potato Family:	
Woody Nightshade	Portland
Primrose Family:	
Primrose	Higher Hyde
Rose Family:	
Agrimony	Portland, Higher Hyde
Blackthorn	Portland
Bramble	Portland, Higher Hyde
Dog Rose	Portland
Hawthorn	Portland, Higher Hyde
Himalayan Cotoneaster	Higher Hyde
Wild Strawberry	Higher Hyde
Sea-Lavender Family:	
Thrift	Portland
Sedge Family:	
Common Cottongrass	Higher Hyde
White Beak-sedge	Higher Hyde
Stonecrop Family:	
White Stonecrop	Higher Hyde
Sundew Family:	
Round-leaved Sundew	Higher Hyde
Valerian Family:	
Red Valerian	Portland
Willow Family:	
Sallow	Higher Hyde